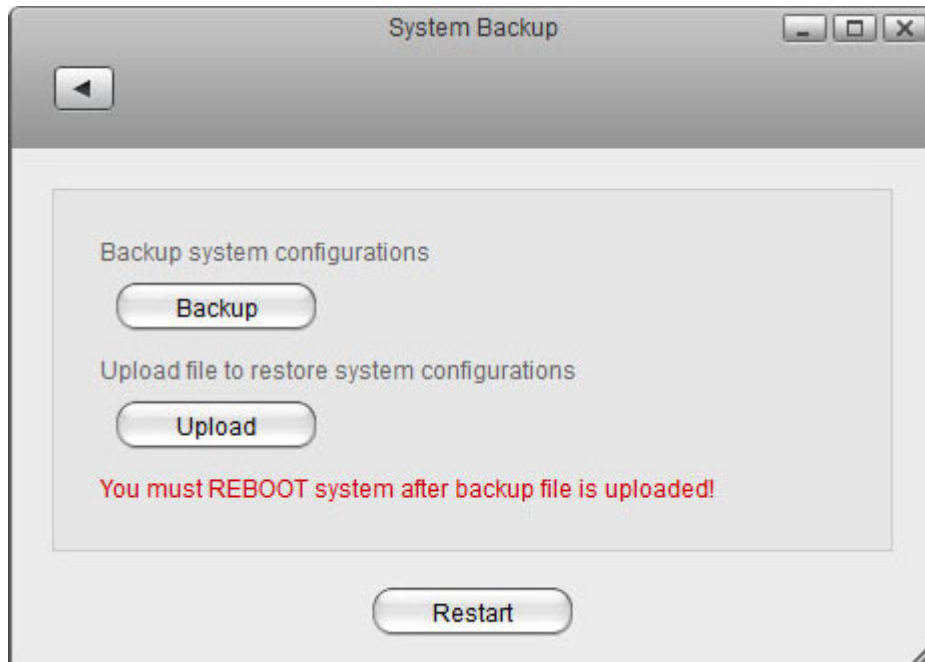


System Backup

The system backup function allows you to backup and restore the settings and configuration of your network drive.



| Field | Description |
|----------------|--|
| Backup | Click Backup to save your current settings in a ZIP file that you can store on your computer. |
| Upload | Click Upload and select a previous backup file (ZIP file) in order to restore the settings to the previous state. |
| Restart | Click Restart to reboot the system |



You must reboot the system after uploading an old backup (ZIP file) in order to completely restore the settings.

From:

<http://wiki.myakitio.com/> - **MyAkitio Wiki**

Permanent link:

http://wiki.myakitio.com/system_information_system_backup

Last update: **2012/09/05 14:08**

